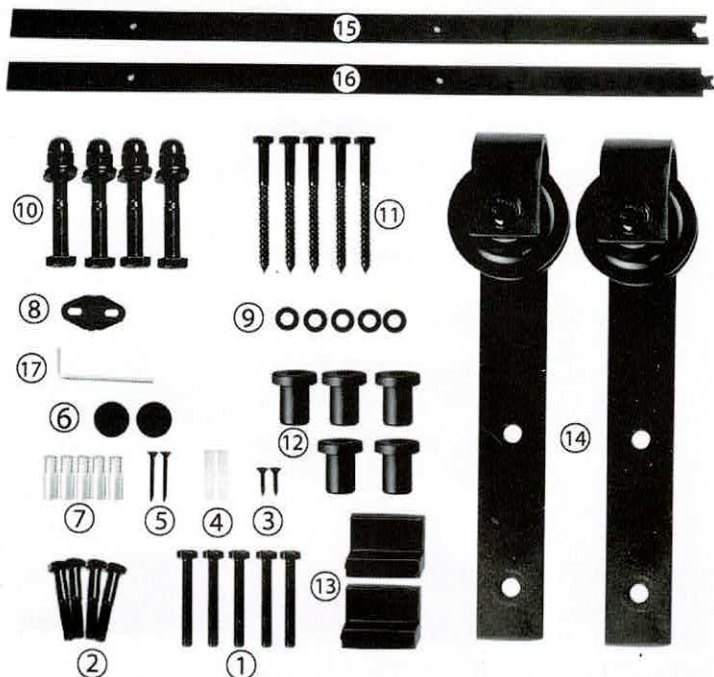


**PACKAGE CONTAINS:**

PLEASE VERIFY THAT YOU HAVE ALL THE PARTS LISTED BELOW:



**PART LIST TABLE I :**



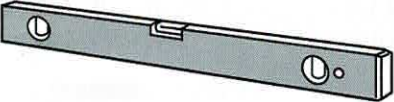
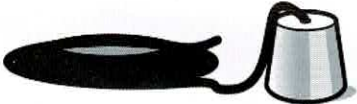


Part No.	Description	Quantity
1	M8 x 60mm ( $\frac{5}{16}$ " x $2\frac{3}{8}$ " )	5pcs
2	M10 x 55 mm ( $\frac{3}{8}$ " x $2\frac{3}{16}$ " )	4pcs (bolts for 35mm~40mm $1\frac{3}{8}$ " ~ $1\frac{9}{16}$ " door)
3	Shorter Screw	2pcs(used with anti-jump block)

**PART LIST TABLE II :**

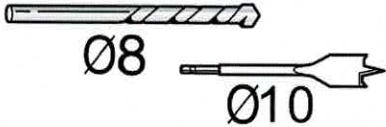
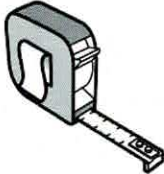
4	Plastic Expansion Bolt	2pcs
5	ST4.2 x 25 mm ( $\frac{3}{16}$ " x 1") (#8)	2pcs
6	Anti-jump Block	2pcs
7	Metal Expansion Bolt	5pcs
8	Floor Guide	1pc
9	Washer	5pcs
10	M10 x 60 mm ( $\frac{3}{8}$ " x $2\frac{3}{8}$ " )	4 sets (bolts for 40~45mm ( $1\frac{9}{16}$ " x $1\frac{3}{4}$ " door)
11	M8 x 90 mm ( $\frac{5}{16}$ " x $3\frac{9}{16}$ " )	5pcs
12	Clip	5pcs
13	Roller Stopper	2pcs
14	Roller	2pcs
15	Sliding Track (Right)	1pc
16	Sliding Track (Left)	1pc
17	Inner Hexagon Spanner	1pc

**TOOL REQUIRED (NOT INCLUDED) I:**

Prepare tools listed below:

	<p>Pencil for drawing line on the wall and door.</p>
	<p>Phillips Screwdriver for tightening the screw.</p>
	<p>Levelling instrument for keeping line level.</p>
	<p>Plumb line for keeping vertical.</p>
	<p>Hexagon spanner for tightening the nuts to bolts.</p>
	<p>Drill for drilling the hole on the wall and the door panel.</p>

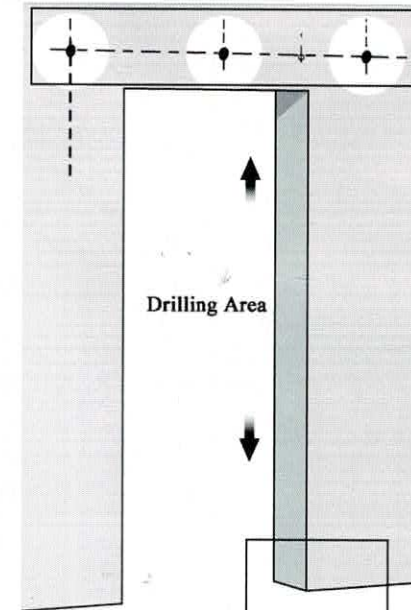
**TOOL REQUIRED (NOT INCLUDED) II:**

	<p>Drilling bit for drilling the hole on the wall and the door panel. (M8 will be used to drill the wall and M 10 will be used to drill door)</p>
	<p>Steel measuring tape for measuring the distance.</p>

**BEFORE ASSEMBLY I:**

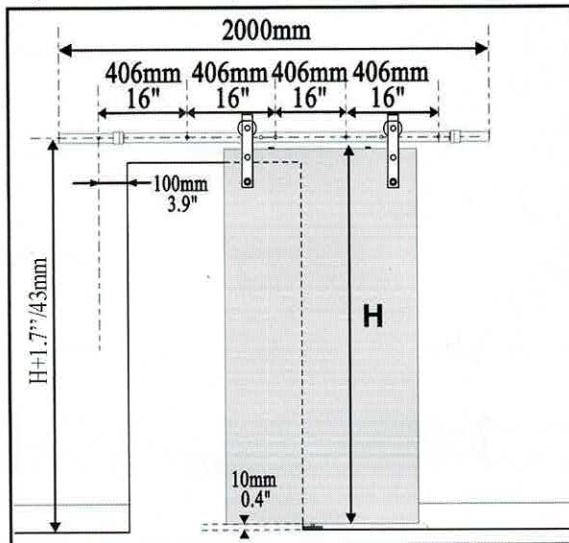
Please check if the drilling area is free for drilling, if not, do not drill holes. Make sure that no wire or other danger in the wall or floor.

**Load bearing wall is required when you are going to install the rail. If it does not meet the requirement, please do not install it.**



**BEFORE ASSEMBLY II :**

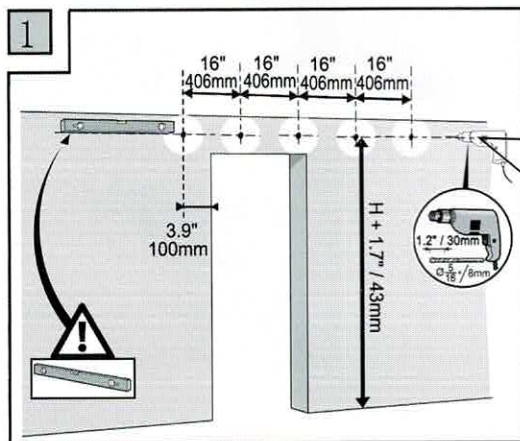
Measuring: before assembly, you should measure the door panel height and check the below figure to see whether your door panel is suitable to your requirement.



**ASSEMBLY STEPS:**

**1** Draw lines and points on the wall according to below figure.

Drill the hole on the all the points. The depth should be 30mm ( $1\frac{3}{16}$ "), the drill bit diameter should be 8mm ( $\frac{5}{16}$ ").

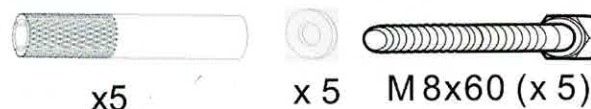


*Remark: Please select the correct drill and drill bit according to the materials and construction of your wall*

**2** Assemble the sliding track (left & right) and shim block with proper screws

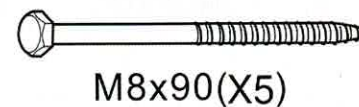
You can choose one of below sets according to your wall construction and materials

Plan 1: Set the metal explosion bolt into the wall then tighten the screw into the bolt. (Screw:  $\frac{5}{16}$  " x  $2\frac{3}{8}$  ")

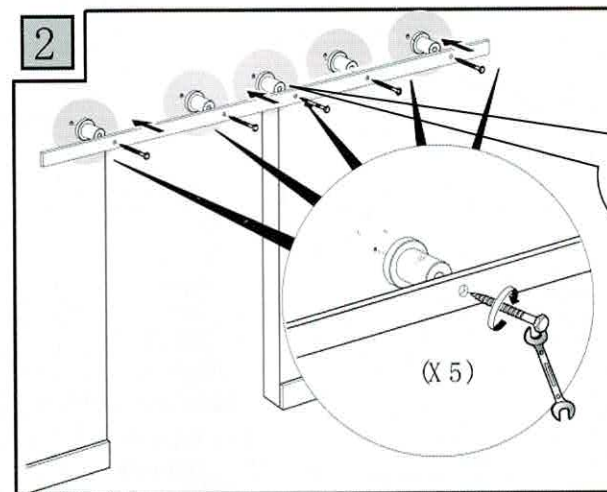


Plan 1

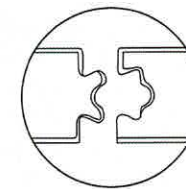
Plan 2: Tighten the screw into the wall directly. (Screw:  $\frac{5}{16}$  " x  $3\frac{9}{16}$  ")



Plan 2



*Remark: The correct direction of the sliding track should be followed.*





**3** Set the two points on the door panel

Drill through the door panel. The drill bit diameter is 10mm ( $\frac{3}{8}$ ").

Assemble the roller to the door panel as shown below. Two sets of screws are provided:

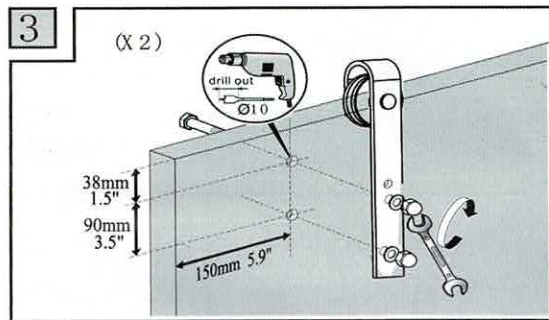
M10 x 55mm ( $\frac{3}{8}$ " x  $2\frac{3}{16}$ " ) — screws for board thickness from

35mm~40mm ( $1\frac{3}{8}$ "~ $1\frac{9}{16}$ " )

M10 x 60mm ( $\frac{3}{8}$ " x  $2\frac{3}{8}$ " ) — screws for board thickness from

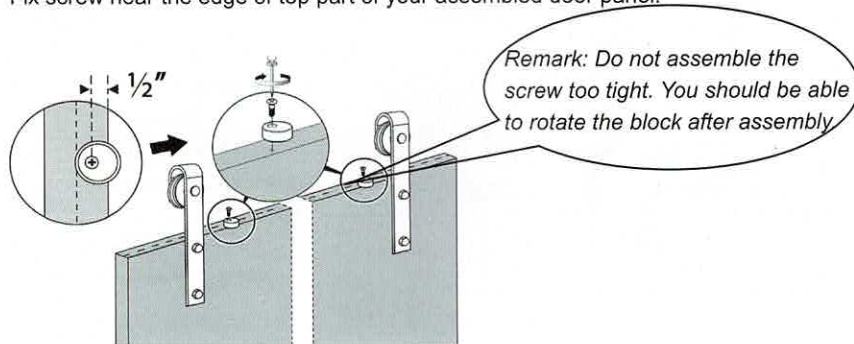
40mm~45mm ( $1\frac{9}{16}$ "~ $1\frac{3}{4}$ " )

Repeat steps above to assemble the other roller.

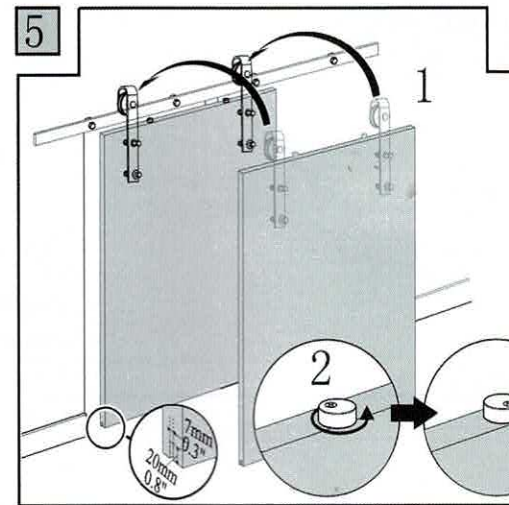
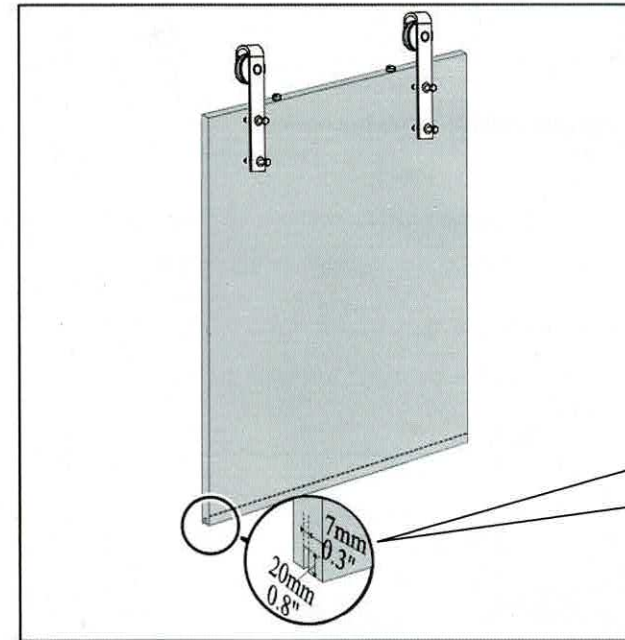


**4** Assemble the anti-jump blocks.

Fix screw near the edge of top part of your assembled door panel.



**5** Assemble the door panel to the sliding track.



- Remark:
1. Rotate the anti-jump blocks to make sure its most bottom not on the top surface of door panel.
  2. Put the roller on the sliding track.
  3. Rotate the anti-jump block until its bottom on the top surface of the assembled door panel.

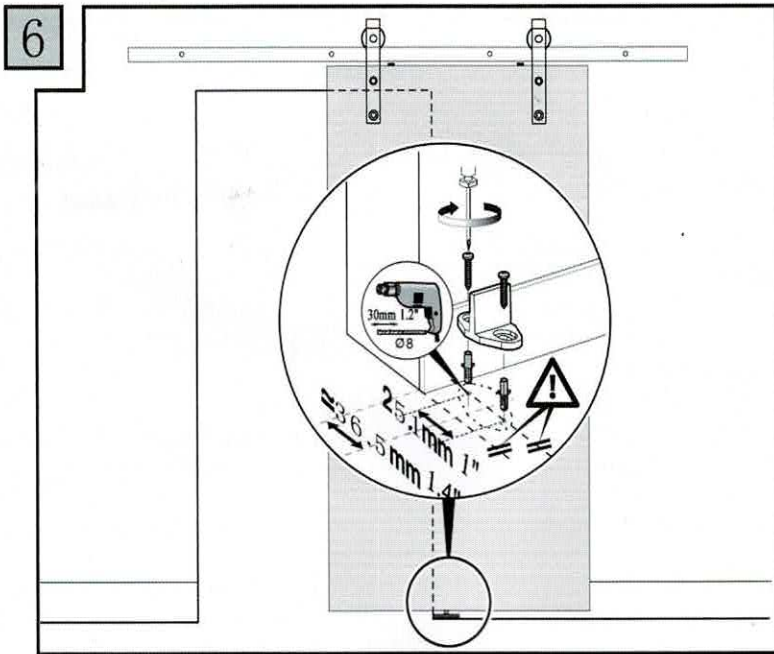
## 6 Assemble the floor guide:

Floor guide shall be assembled at lower right corner as shown;

1. The middle point of floor guide is about 36.5mm ( $1\frac{3}{8}$ "') from the wall side (not include the baseboard on the wall).

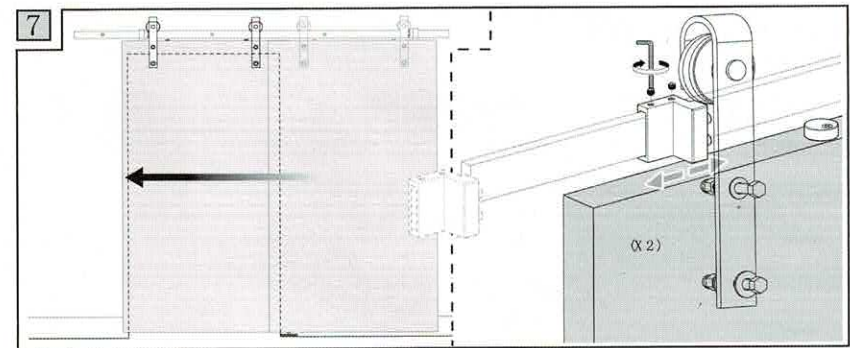
**IMPORTANT! : We recommend that it's better to check the distance with your real door panel, the provided data varies according to the door panel and the kinds of the wall**

2. Draw the middle point and drilling points of floor guide on the floor;
3. Drill the holes on the floor: the depth of the hole shall be 30mm ( $1\frac{3}{16}$ "'); the diameter of the hole shall be 8mm ( $\frac{5}{16}$ "');
4. Set the plastic expansion bolt into the holes and assemble the floor guide with screw as shown.



## 7 Assemble the roller stopper:

Slide the roller stopper into the ends of the sliding track;  
Use inner hexagon spanner to fix roller.



### WARNING:

- ENTRAPMENT MAY OCCUR. BE CAREFUL OF FINGERS.
- PERIODICALLY CHECK TO ENSURE THAT ALL THE COMPONENTS ARE IN THEIR PROPER POSITION, FREE FROM DAMAGE, AND THAT ALL CONNECTIONS ARE TIGHT.
- MAXIMUM LOAD: 100KG/220LBS. LIMIT YOUR DOOR PANEL'S WEIGHT TO THIS CAPACITY.
- DO NOT CRASH THE DOOR DURING NORMAL USE.
- HEAVY COMPONENTS SHALL BE LIFTED WHEN ASSEMBLING. 3 PEOPLE AT LEAST ARE REQUIRED FOR THE ASSEMBLY.